



HAWKSGROVE

ESTATES

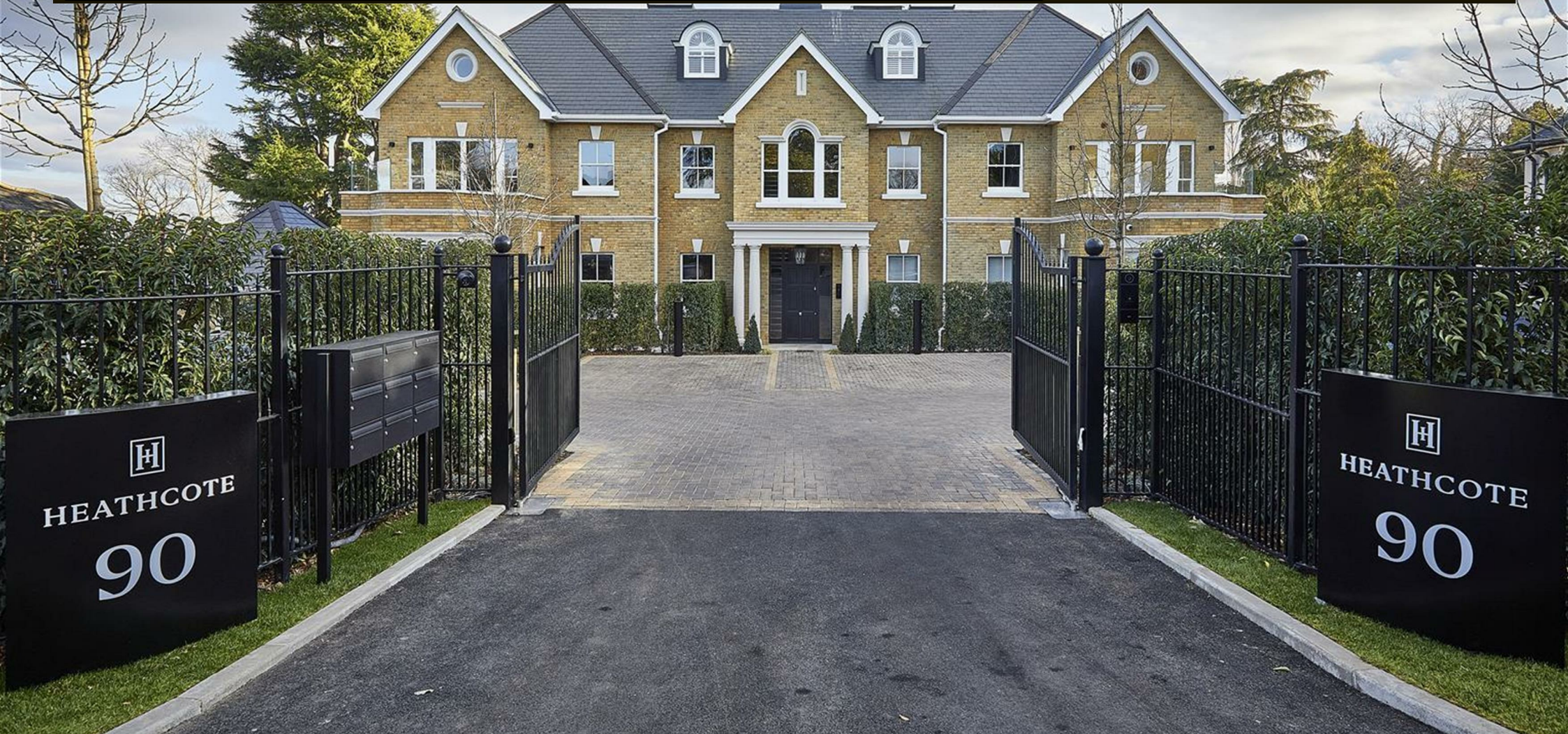
LETTINGS · SALES · MANAGEMENT · CONSTRUCTION

01707 876141/07590 370731

hello@hawkgroveestates.com

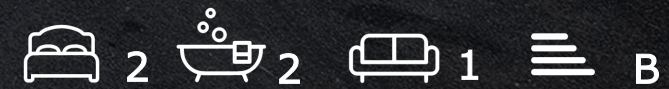
www.hawkgroveestates.com

[@hawkgroveestates](https://www.instagram.com/hawkgroveestates)



Flat 8 90 Camlet Way
, Hadley Wood, EN4 0NX

£925,000

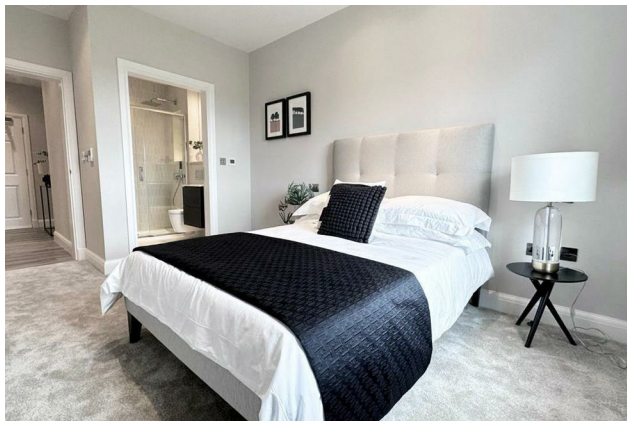


Flat 8 90 Camlet Way, Hadley Wood, EN4 0NX

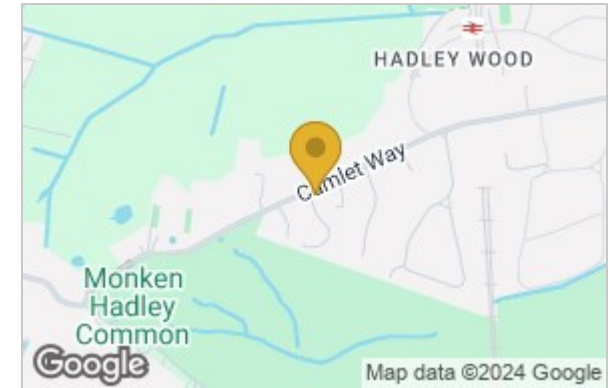
Located in the heart of Hadley Wood on the desirable Camlet Way is the brand new gated development, Heathcote House, built by award winning developers Artemi and Gibbs.

The spectacular first floor apartment benefits from its own private balcony as well as a stunning, high spec open plan kitchen diner and living room, primary bedroom with en-suite followed by another spacious bedroom and family bathroom. There is also a separate utility room.

The apartment also benefits from the beautifully landscaped communal garden as well as a parking space.



Area Map



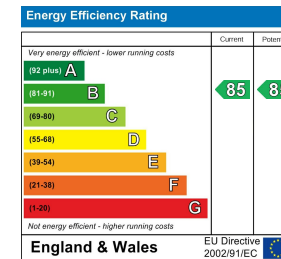
Floor Plan

APARTMENT 8

INTERNAL AREA	EXTERNAL AREA
890 sqft	80 sqft

LIVING/DINING/KITCHEN	9.6m x 3.85m		37'6" x 12'6"
MASTER BEDROOM	5.7m x 2.75m		18'8" x 9'1"
BEDROOM 2	4.95m x 2.55m		16'3" x 8'4"

Energy Efficiency Graph



These particulars, whilst believed to be accurate are set out as a general outline only for guidance and do not constitute any part of an offer or contract. Intending purchasers should not rely on them as statements of representation of fact, but must satisfy themselves by inspection or otherwise as to their accuracy. No person in this firm's employment has the authority to make or give any representation or warranty in respect of the property.

5 orchard close cuffley, potters bar, EN6 4QD
 Tel: 01707876141 Email: john@hawksgrovestates.com